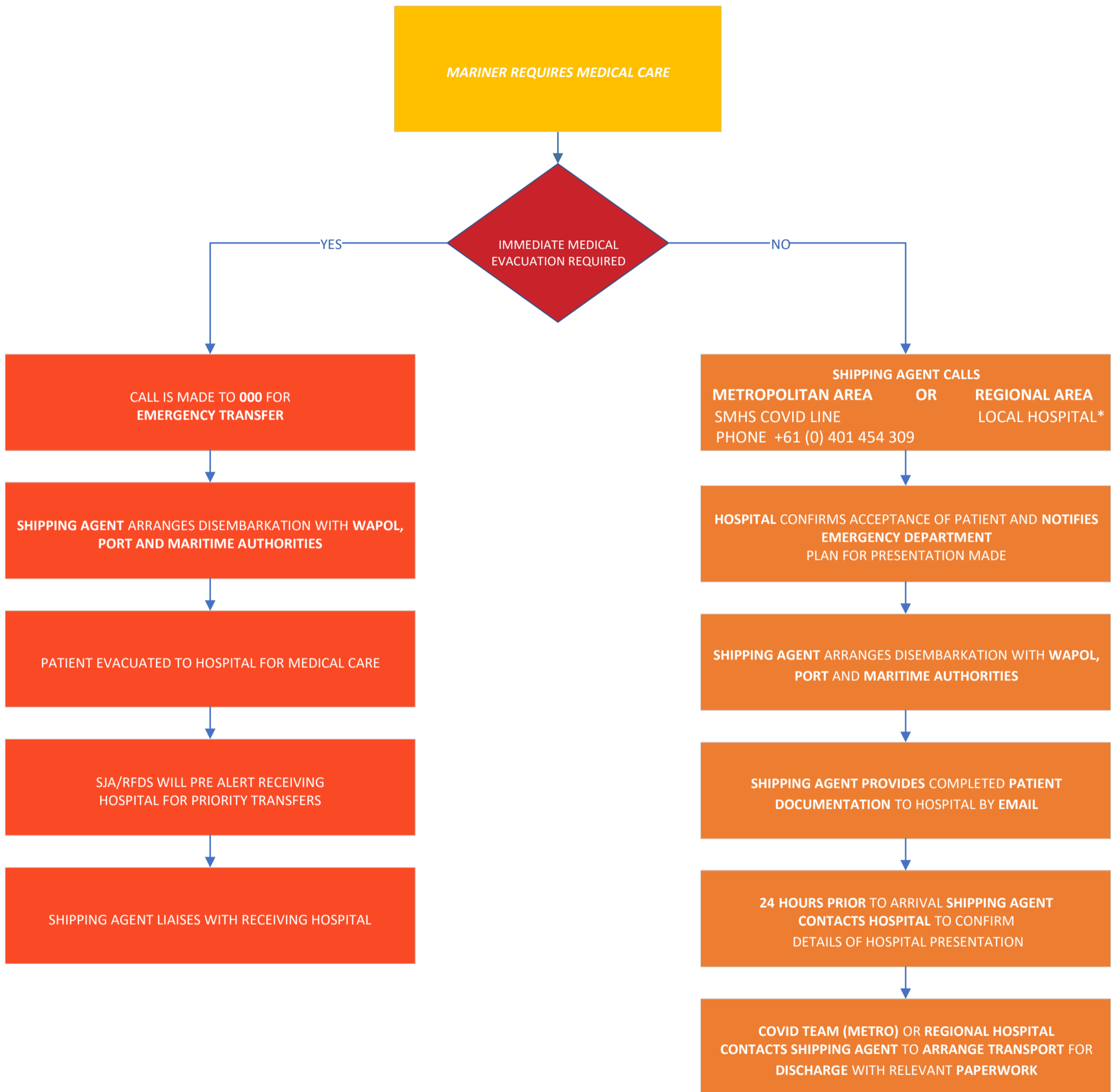




## Medical assessment for mariners



\*

Region	Port	Hospital	REOC contact information
<b>Goldfields</b>	Esperance	Contact ED Nurse Manager/After Hours Nurse Manager Esperance Health Campus (08) 93079 8000 Hicks Street, Esperance	Goldfields REOC 1800 976 123 E: Goldfields.REOC@health.wa.gov.au
<b>Great Southern</b>	Albany	Contact ED Nurse Manager/After Hours Nurse Manager Albany Hospital (08) 9892 2222 Cnr Hardie Rd & Warden Ave, Spencer Park	Great Southern REOC 1800 975 335 E: gsr.reoc@health.wa.gov.au
<b>Kimberley</b>	Broome	Contact ED Nurse Manager/After Hours Nurse Manager Broome Health Campus (08) 9194 2222 26 Robinson Street, Broome	Kimberley REOC 1800 565 999 E: KBR-REOC@health.wa.gov.au
	Derby	Contact ED Nurse Manager/After Hours Nurse Manager Derby Hospital (08) 9193 3333 67-71 Clarendon Street, Derby	
	Wyndham	Contact ED Nurse Manager/After Hours Nurse Manager Wyndham Hospital (08) 9161 0222 Minderoo Street, Wyndham	
<b>Midwest</b>	Carnarvon	Contact ED Nurse Manager/After Hours Nurse Manager Carnarvon Hospital (08) 9941 0555 Cleaver Street, Carnarvon	Midwest REOC 1800 955 919 E: MWR-REOC@health.wa.gov.au
	Geraldton	Contact ED Nurse Manager/After Hours Nurse Manager Geraldton Regional Hospital (08) 9956 2222 51 Shenton Street, Geraldton	
<b>Pilbara</b>	Onslow	Contact ED Nurse Manager/After Hours Nurse Manager Onslow Hospital (08) 9184 3200 Second Avenue, Onslow	Pilbara REOC 1800 955 819 E: WACHSPB_REOC@health.wa.gov.au
	Hedland	Contact ED Nurse Manager/After Hours Nurse Manager Hedland Health Campus (08) 9174 1000 26-34 Colebatch Way, South Hedland	
	Karratha	Contact ED Nurse Manager/After Hours Nurse Manager Karratha Health Campus (08) 9144 7501 62 Balmoral Road, Karratha	
<b>South West</b>	Bunbury	Contact ED Nurse Manager/After Hours Nurse Manager Bunbury Hospital (08) 9722 1000 Cnr Bussell Hwy & Robertson Dr, Bunbury	South West REOC 1800 966 219 E: SWR.REOC@health.wa.gov.au

Last updated 8 July 2021

This document can be made available in alternative formats on request for a person with disability.

© Department of Health 2020

Copyright to this material is vested in the State of Western Australia unless otherwise indicated. Apart from any fair dealing for the purposes of private study, research, criticism or review, as permitted under the provisions of the *Copyright Act 1968*, no part may be reproduced or reused for any purposes whatsoever without written permission of the State of Western Australia.

[health.wa.gov.au](http://health.wa.gov.au)