



COVID-19 weekly surveillance report

Table of contents

Summary for the week 19 to 25 February 2024 (inclusive)	2
Case data	3
Figure 1. COVID-19 cases by notification week and test type, Western Australia, 09 January 2022 to 25 February 2024.....	3
Figure 2. COVID-19 cases by age group and sex, Western Australia, 19 to 25 February 2024.....	4
Figure 3. 7-day moving average of COVID-19 age-specific rates per 100,000 population, Western Australia, 06 February 2022 to 25 February 2024.....	5
Figure 4. 7-day moving average of COVID-19 case rates per 100,000 population by health region of residence, Western Australia, 06 February 2022 to 25 February 2024.....	6
Table 1. Number of COVID-19 cases and rates per 100,000 population by reporting week and health region of residence, Western Australia.....	7
Aboriginal case summary	8
Figure 5. COVID-19 case rates per 100,000 population and rate ratio by Aboriginal status and notification week, Western Australia, 09 October 2022 to 25 February 2024.....	8
Hospitalisations, intensive care unit (ICU) inpatients and deaths	9
Figure 6. 7-day average of COVID-19 cases currently in hospital or in ICU, 09 January 2022 to 25 February 2024.....	9
Table 2. Number of COVID-19 related deaths by sex and age group, 19 to 25 February 2024 and 01 January 2022 to 25 February 2024.....	10
Testing data	11
Figure 7. Number of COVID-19 polymerase chain reaction tests and positivity by laboratory category and week of specimen collection, 09 February 2020 to 25 February 2024.....	11

Summary for the week 19 to 25 February 2024 (inclusive)

This week there were:

- 254 COVID-19 cases reported
- 31 new hospital admissions and 2 admissions into an intensive care unit
- 10 deaths
- 2,934 COVID-19 PCR tests conducted

Surveillance summary

This week, **case numbers** decreased by 1.6% compared to the previous week.

The number of **PCR tests** increased by 1.0% compared to the previous week, with a 7-day average positivity rate of 8.8%.

The moving seven-day average **case rate** per 100,000 population increased in the Kimberley and Perth metropolitan regions, remained steady in the Goldfields and Wheatbelt regions, and decreased in the Great Southern, Midwest, Pilbara, and South West regions. The seven-day average case rate for the Perth metropolitan region (1.4 cases/100,000 population) was slightly higher than the non-metropolitan regions combined (1.0 cases/100,000 population).

The seven-day average **age-specific rate** increased in the 70+ years age group and decreased in all other age groups. The highest rate was in the 70+ years age group (5.5 cases/100,000 population), and the lowest rate in the 10 - 19 years age groups (0.4 case/100,000 population).

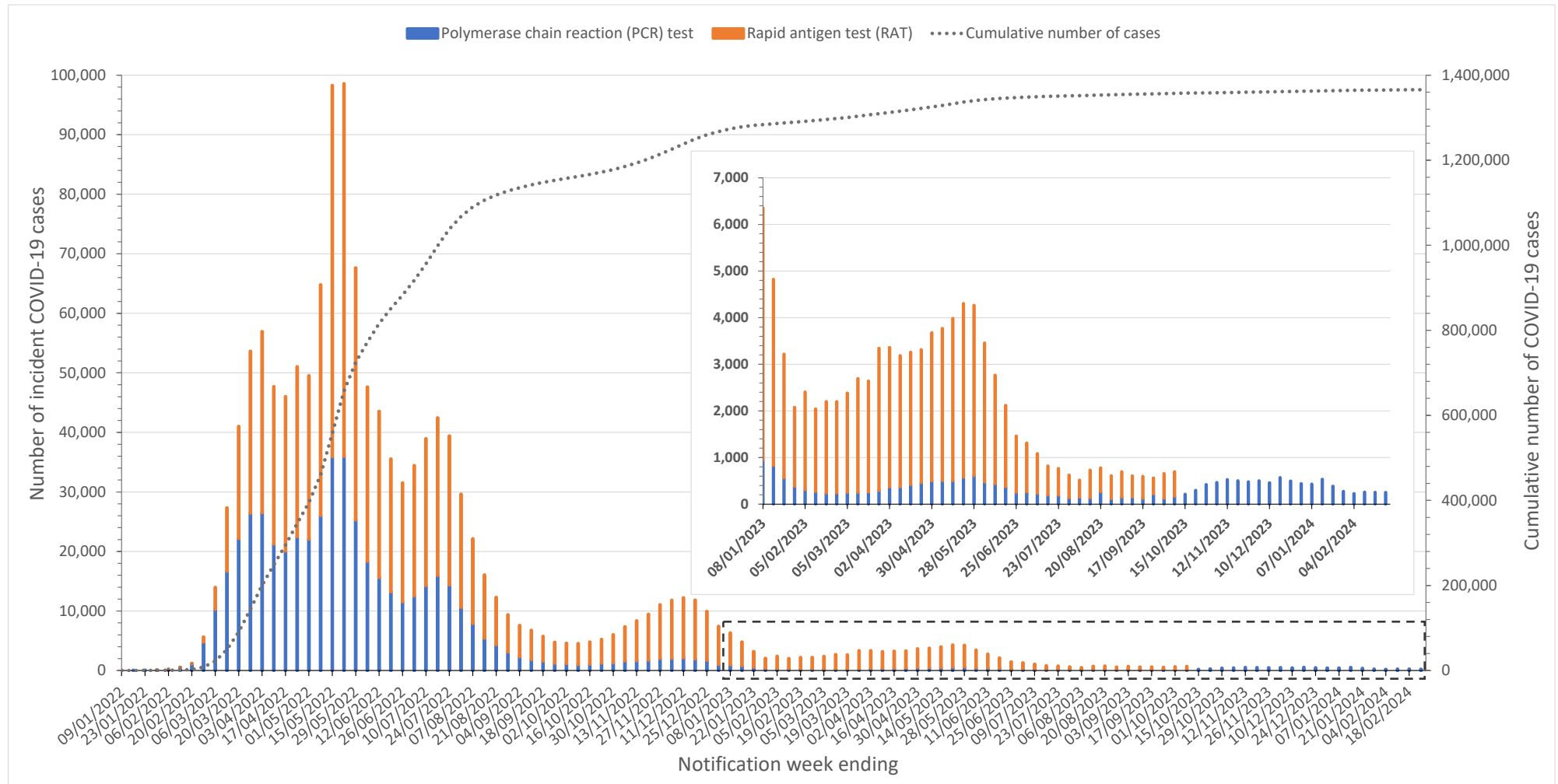
The 7-day average of currently **hospitalised cases** decreased by 3.6% from 111 last week to 107 this week, and **intensive care unit cases** remained the same with 3 cases this week. **New hospital admissions** related to COVID-19 increased by 34.8% from 23 last week to 31 this week, and **direct intensive care unit admissions** increased with 2 this week.

Deaths increased this week with 10 deaths reported compared to 7 deaths last week.

This week, 15 cases were reported in the **Aboriginal population**, an increase compared to 12 cases last week. Case rates in the Aboriginal population were slightly higher than the non-Aboriginal population, with a 7-day average rate ratio of 1.5. There were no deaths reported in the Aboriginal population this week.

Case data

Figure 1. COVID-19 cases by notification week and test type, Western Australia, 09 January 2022 to 25 February 2024.



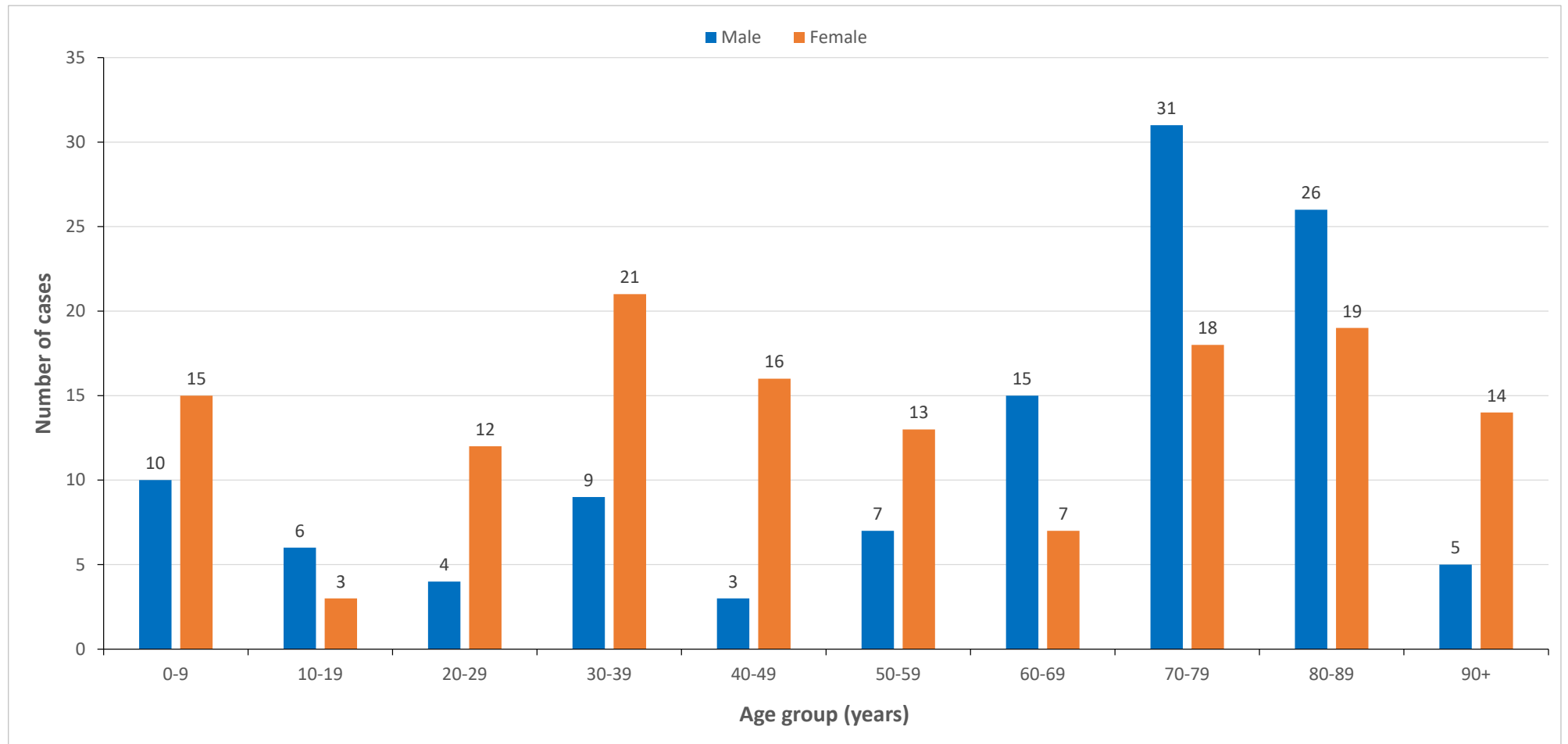
Notes

Data sourced from Western Australia Department of Health dataset

From 9 October 2023, COVID-19 cases diagnosed by rapid antigen test (RAT) have not been counted due to the closure of the online RAT registration system

Notification week refers to data reported over the 7 days Monday to Sunday.

Figure 2. COVID-19 cases by age group and sex, Western Australia, 19 to 25 February 2024.



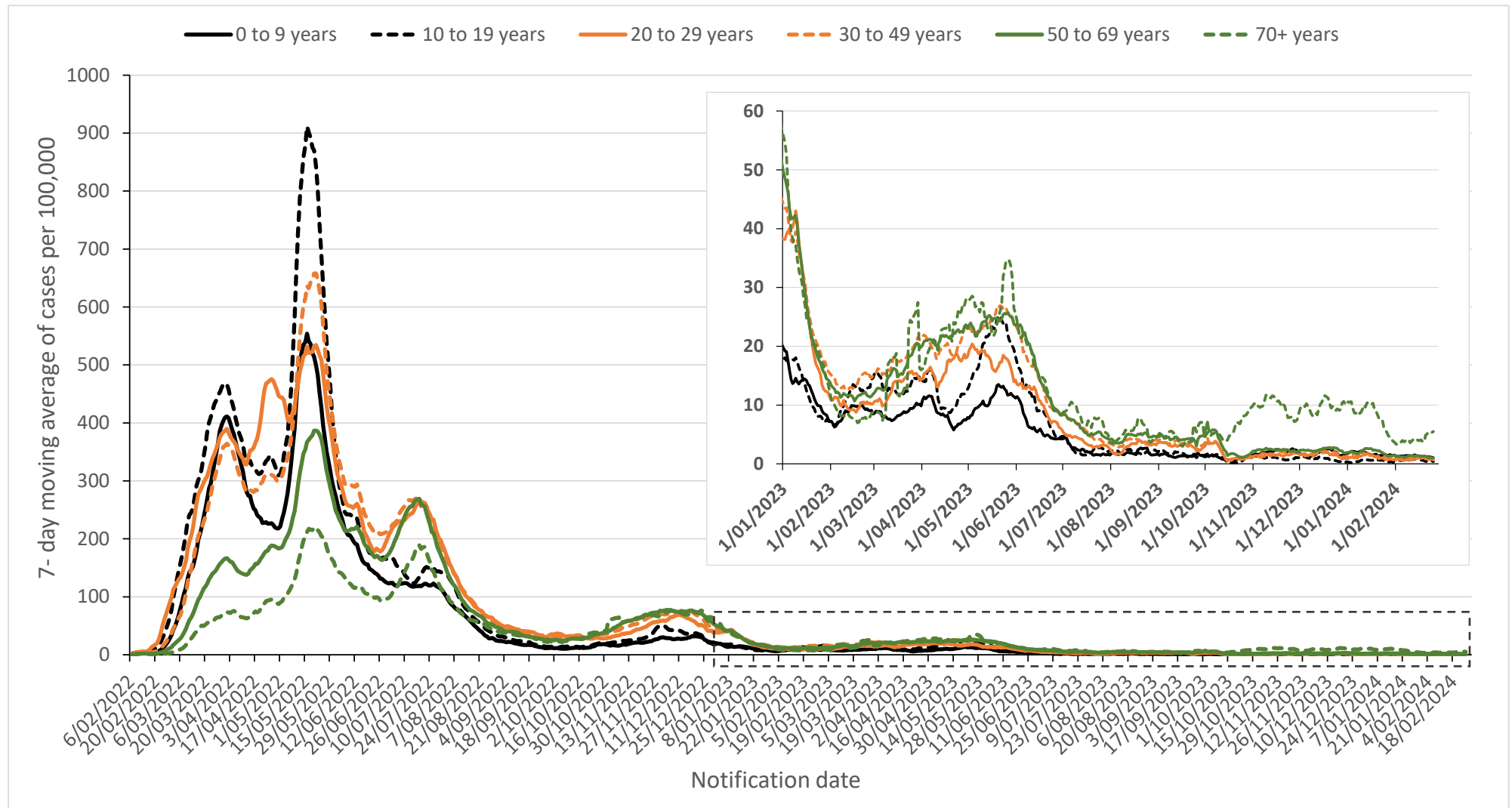
Notes

Data sourced from Western Australia Department of Health dataset

From 9 October 2023, COVID-19 cases diagnosed by rapid antigen test (RAT) have not been counted due to the closure of the online RAT registration system

- Males: n=116 (45.7%) Females: n=138 (54.3%)
- Median age = 64 years; range: 0 to 102 years

Figure 3. 7-day moving average of COVID-19 age-specific rates per 100,000 population, Western Australia, 06 February 2022 to 25 February 2024.



Notes

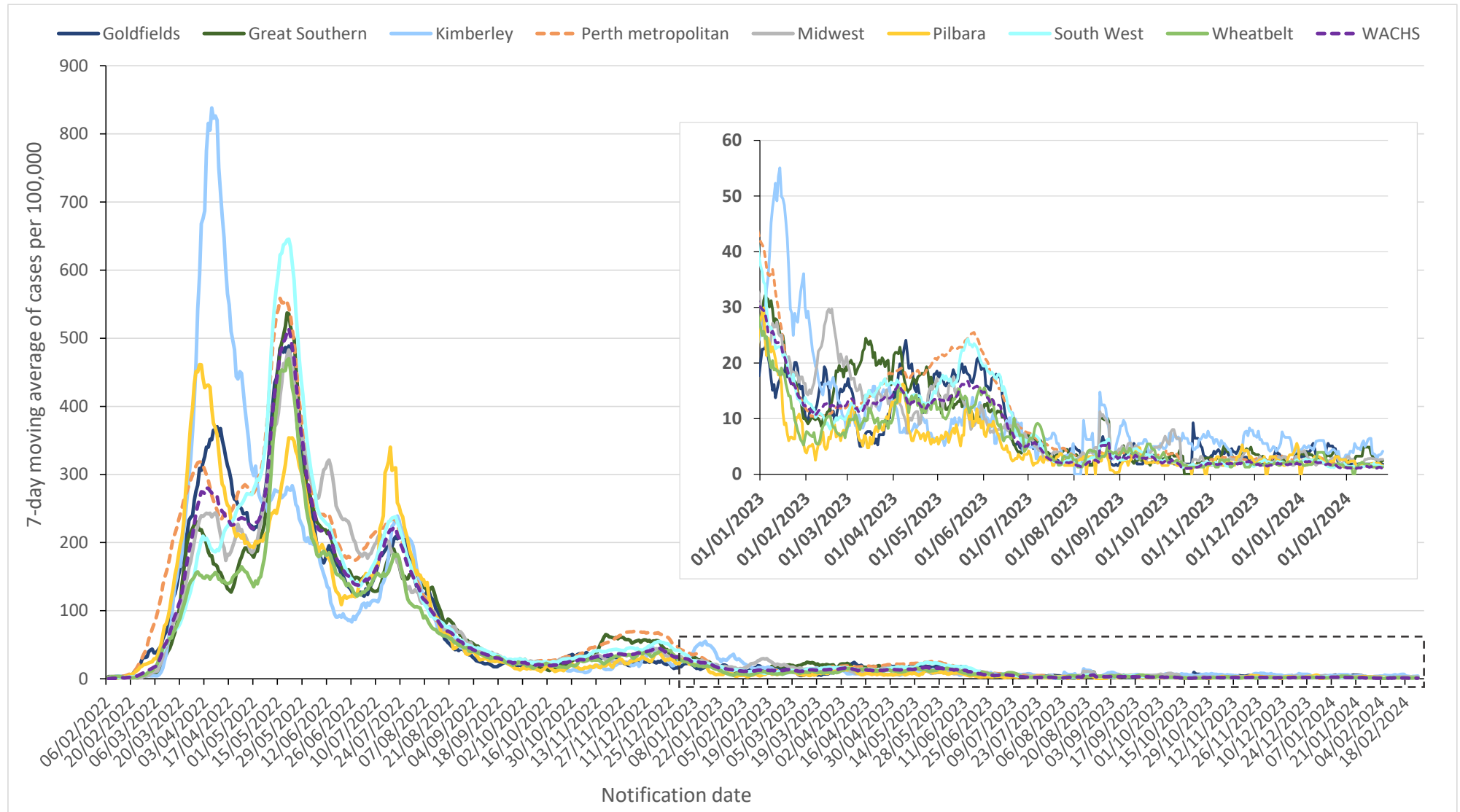
Data sourced from Western Australia Department of Health dataset

Notification date refers to the date that a case is notified to Western Australia Department of Health

From 9 October 2023, COVID-19 cases diagnosed by rapid antigen test (RAT) have not been counted due to the closure of the online RAT registration system

Population denominator sourced from Australian Bureau of Statistics June 2021 estimates.

Figure 4. 7-day moving average of COVID-19 case rates per 100,000 population by health region of residence, Western Australia, 06 February 2022 to 25 February 2024.



Notes

Data sourced from Western Australia Department of Health dataset

Notification date refers to the date that a case is notified to Western Australia Department of Health

Western Australia Country Health Service (WACHS) region includes all non-metropolitan health regions: Central-Wheatbelt, Goldfields, Great Southern, Kimberley, Midwest, Pilbara and South West

Perth metropolitan region includes East Metropolitan Health Service, North Metropolitan Health Service and South Metropolitan Health Service

From 9 October 2023, COVID-19 cases diagnosed by rapid antigen test (RAT) have not been counted due to the closure of the online RAT registration system

Population denominator sourced from Australian Bureau of Statistics 2020 estimates.

Table 1. Number of COVID-19 cases and rates per 100,000 population by reporting week and health region of residence, Western Australia.

Health Region		Current report week 19 to 25 February 2024		Previous report week 12 to 18 February 2024	
		Number	Rate [^]	Number	Rate [^]
Perth metropolitan region		213	10	204	10
WACHS Regions		39	7	46	9
	Goldfields	3	6	3	6
	Great Southern	6	10	8	13
	Kimberley	3	8	4	11
	Midwest	5	8	7	11
	Pilbara	4	6	5	8
	South West	16	9	15	8
	Wheatbelt	2	3	4	5
Other*		2	-	8	-
Total		254	9	258	9

Notes

Data sourced from Western Australia Department of Health dataset

Notification date refers to the date that a case is notified to Western Australia Department of Health

Western Australia Country Health Service (WACHS) region includes all the non-metropolitan regions: Central-Wheatbelt, Goldfields, Great Southern, Kimberley, Midwest, Pilbara and South West

Perth Metropolitan region includes East Metropolitan Health Service, North Metropolitan Health Service and South Metropolitan Health Service

* Other includes cases with overseas and interstate residential addresses, and cases without residential address information

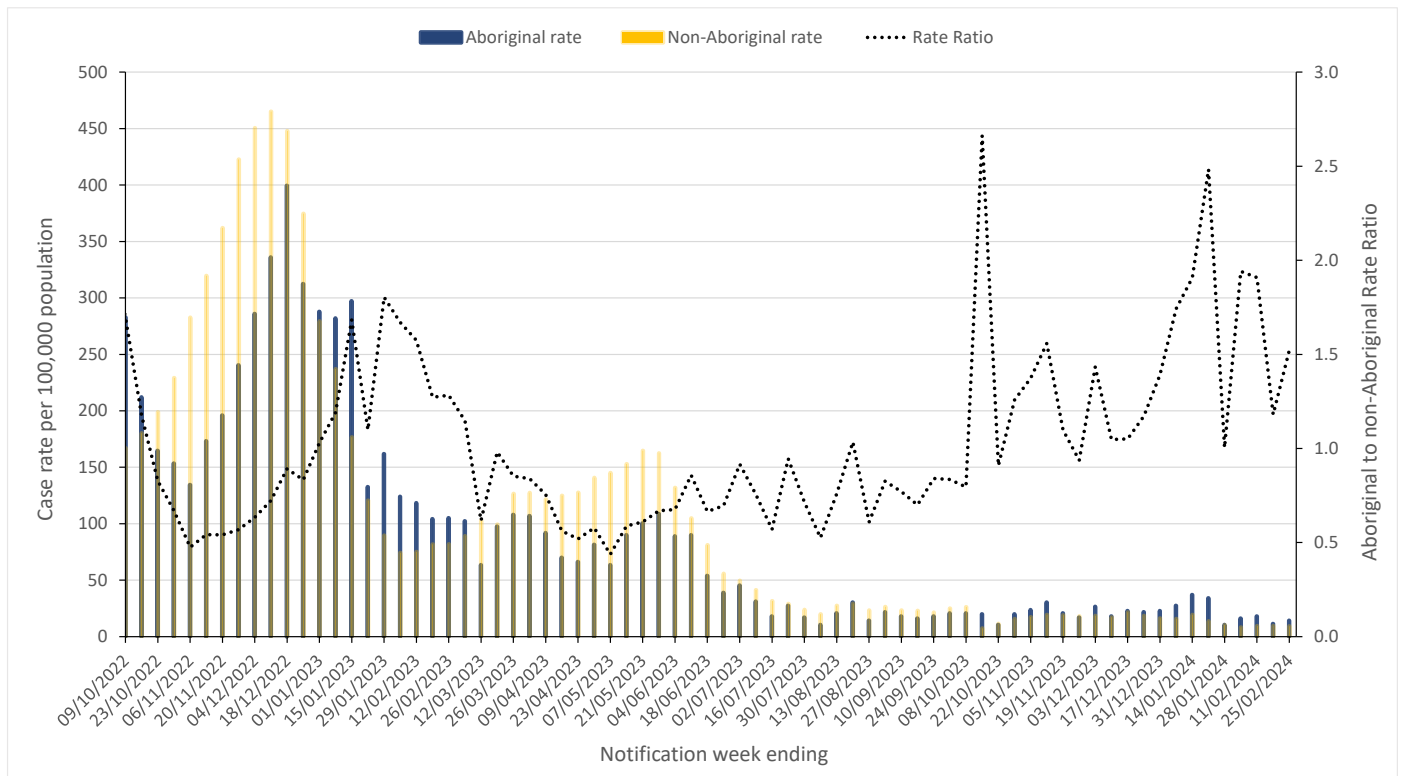
[^] Rate reported as cases per 100,000 population. The total rate excludes "Other" cases, as there is no denominator population representing this group

From 9 October 2023, COVID-19 cases diagnosed by rapid antigen test (RAT) have not been counted due to the closure of the online RAT registration system

Population denominator is sourced from Australian Bureau of Statistics 2020 estimates.

Aboriginal case summary

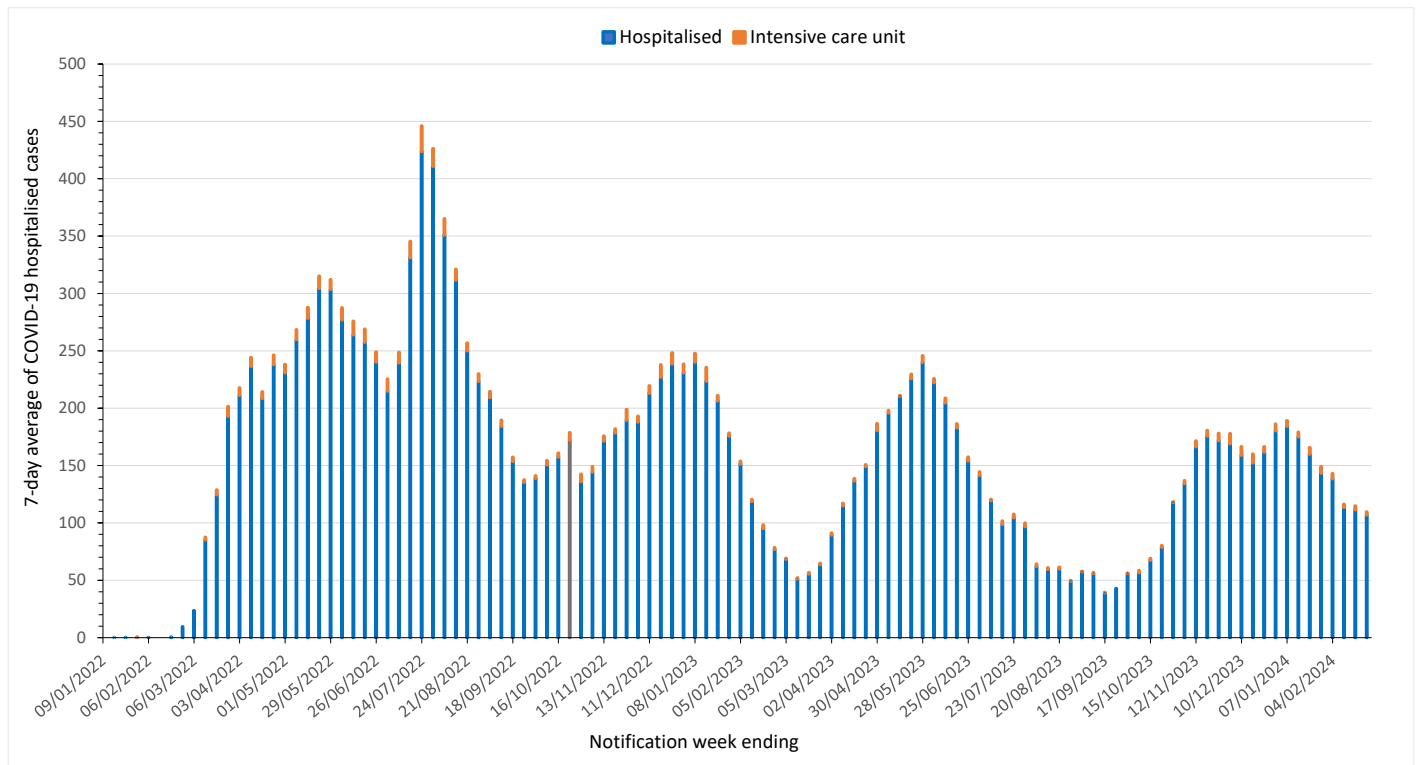
Figure 5. COVID-19 case rates per 100,000 population and rate ratio by Aboriginal status and notification week, Western Australia, 09 October 2022 to 25 February 2024.



Notes
 Data sourced from Western Australia Department of Health dataset
 Notification week refers to data reported over the 7 days Monday to Sunday
 Aboriginal status is defined as those who identify as 'Aboriginal and Torres Strait Islander (TSI) origin'/'Aboriginal but not TSI origin'/'TSI but not Aboriginal origin'
 Cases where Aboriginal status was not stated were designated as non-Aboriginal
 Rate ratio is calculated by dividing the Aboriginal rate by the non-Aboriginal rate, with a 7-day average of the respective rate ratios applied to smooth the trend
 From 9 October 2023, COVID-19 cases diagnosed by rapid antigen test (RAT) have not been counted due to the closure of the online RAT registration system
 Population denominator data were sourced from Australian Bureau of Statistics 2020 estimates

Hospitalisations, intensive care unit (ICU) inpatients and deaths

Figure 6. 7-day average of COVID-19 cases currently in hospital or in ICU, 09 January 2022 to 25 February 2024.



Notes

Data sourced from Western Australia Department of Health dataset

Notification week refers to data reported over the 7 days Monday to Sunday

'Hospitalised' relates to active and cleared COVID-19 cases that are current hospital inpatients. The reason for admission may be unrelated to COVID-19 for some people

'Intensive care unit' (ICU) is a subset of hospitalised and relates to active/cleared COVID-19 cases that are currently in an ICU

The definition of COVID-19 related hospitalisation was updated on 21 October 2022 to exclude cases where more than 60 days have passed since their positive COVID-19 test. This new definition more accurately captures cases in whom COVID-19 may have contributed to their reason for ongoing hospitalisation. Data reported after 21 October cannot be compared directly to data recorded prior to that date.

Table 2. Number of COVID-19 related deaths by sex and age group, 19 to 25 February 2024 and 01 January 2022 to 25 February 2024.

	Current report week 19 to 25 February 2024	Year 2022 to date 01 Jan 2022 – 25 February 2024
Sex	Deaths (n = 10)	Deaths (n = 1,393)
Female	4 (40%)	674 (48.4%)
Male	6 (60%)	719 (51.6%)
Unspecified	0 (0%)	0 (0%)
Age group (years)		
0-9	0 (0%)	0 (0%)
10-19	0 (0%)	2 (0.1%)
20-29	0 (0%)	1 (0.1%)
30-39	0 (0%)	11 (0.8%)
40-49	0 (0%)	15 (1.1%)
50-59	0 (0%)	39 (2.8%)
60-69	0 (0%)	105 (7.5%)
70-79	1 (10%)	271 (19.5%)
80-89	1 (10%)	509 (36.5%)
90+	8 (80%)	440 (31.6%)

Notes

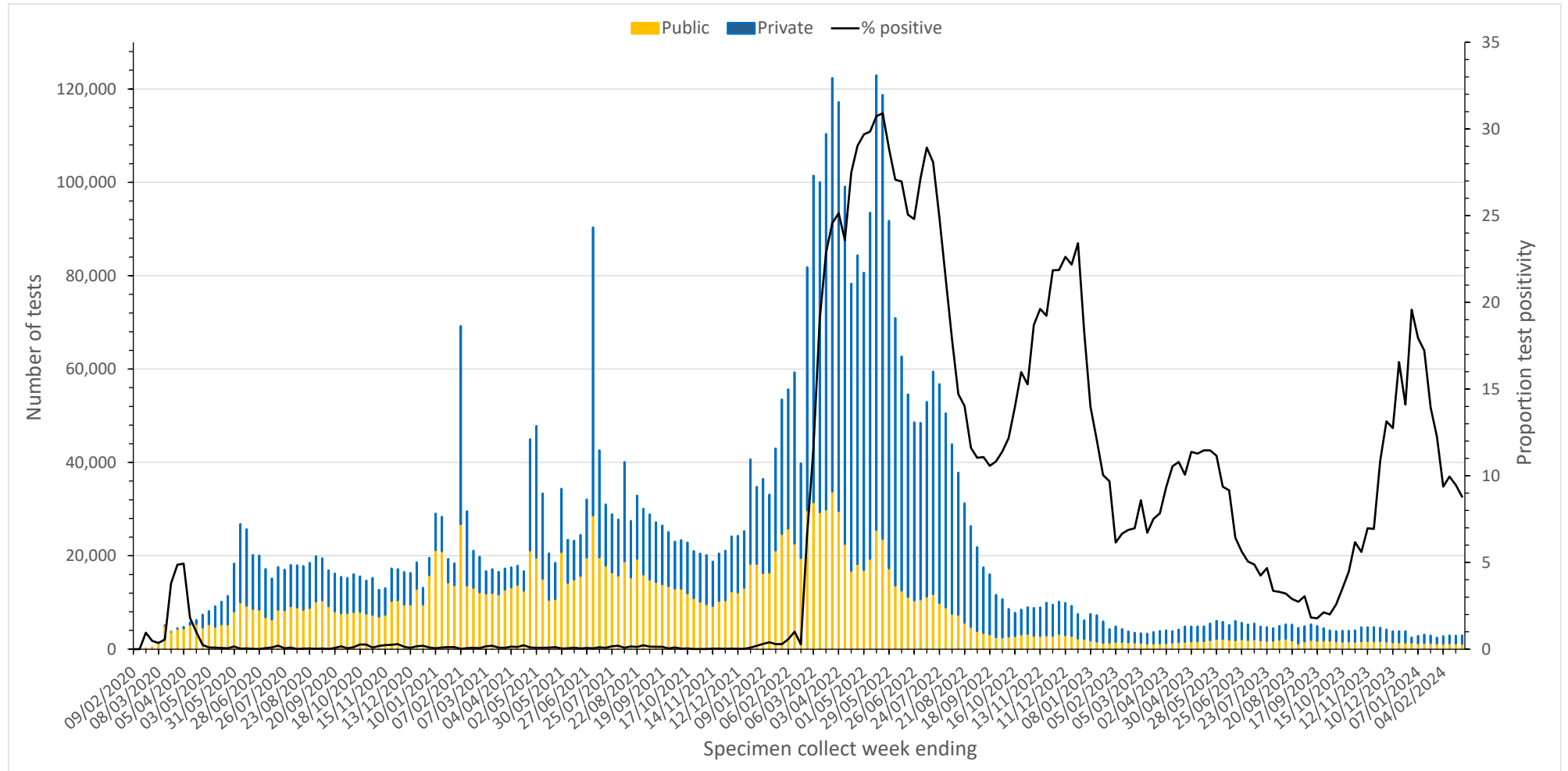
Data sourced from Western Australia Department of Health dataset

Deaths are counted by notification date and may include historical deaths that occurred (i.e. date of death) prior to the current report week

Deaths are not necessarily associated with hospital and/or ICU admissions

Testing data

Figure 7. Number of COVID-19 polymerase chain reaction tests and positivity by laboratory category and week of specimen collection, 09 February 2020 to 25 February 2024.



Notes

Data sourced from Western Australian public and private pathology laboratories

Specimen collect week refers to specimens collected between Monday to Sunday

Number of tests includes both positive and negative tests

From 1 October 2022, testing at private pathology providers requires a referral from a GP

From 3 March 2023, Murdoch COVID-19 public PCR testing clinic closed. From this time forward public access to COVID-19 PCR testing is only via GP referral to private pathology providers.

This document can be made available in alternative formats on request for a person with disability.

© Department of Health 2024

Copyright to this material is vested in the State of Western Australia unless otherwise indicated. Apart from any fair dealing for the purposes of private study, research, criticism or review, as permitted under the provisions of the *Copyright Act 1968*, no part may be reproduced or re-used for any purposes whatsoever without written permission of the State of Western Australia.

health.wa.gov.au