

Paediatric Respiratory Pathogen Report

Week 37, 13th September 2021 – 19th September 2021

- The most common respiratory viruses detected in paediatric patients this week were parainfluenza virus 3 (34 cases), RSV (33 cases) and human metapneumovirus (29 cases).
- Of the 33 paediatric cases of RSV this week, 31 were from the Metro area and 2 were from regional WA.
- There were no paediatric influenza cases detected at PathWest this week.
- The total number of paediatric cases of COVID-19 detected by PCR at PathWest is 63, as of 22nd September.

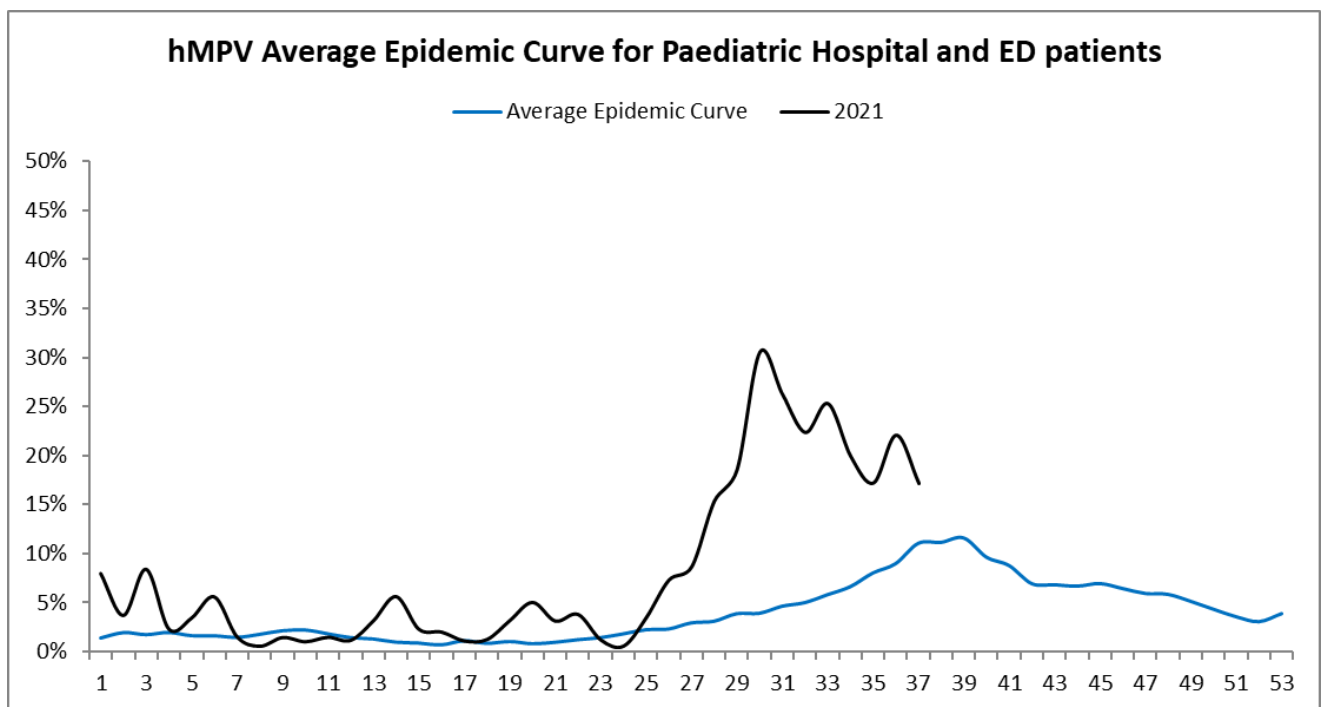


Figure 1: The current season plotted against the Paediatric HMPV Average Epidemic Curve. The average epidemic curve was constructed by averaging all seasons measured at PathWest QE2 from 2007-2019. Data represents all WA hospitalised and ED paediatric patients tested by PathWest

hMPV proportion positive (17%) decreased but remains considerably higher than levels historically observed at this time of year.

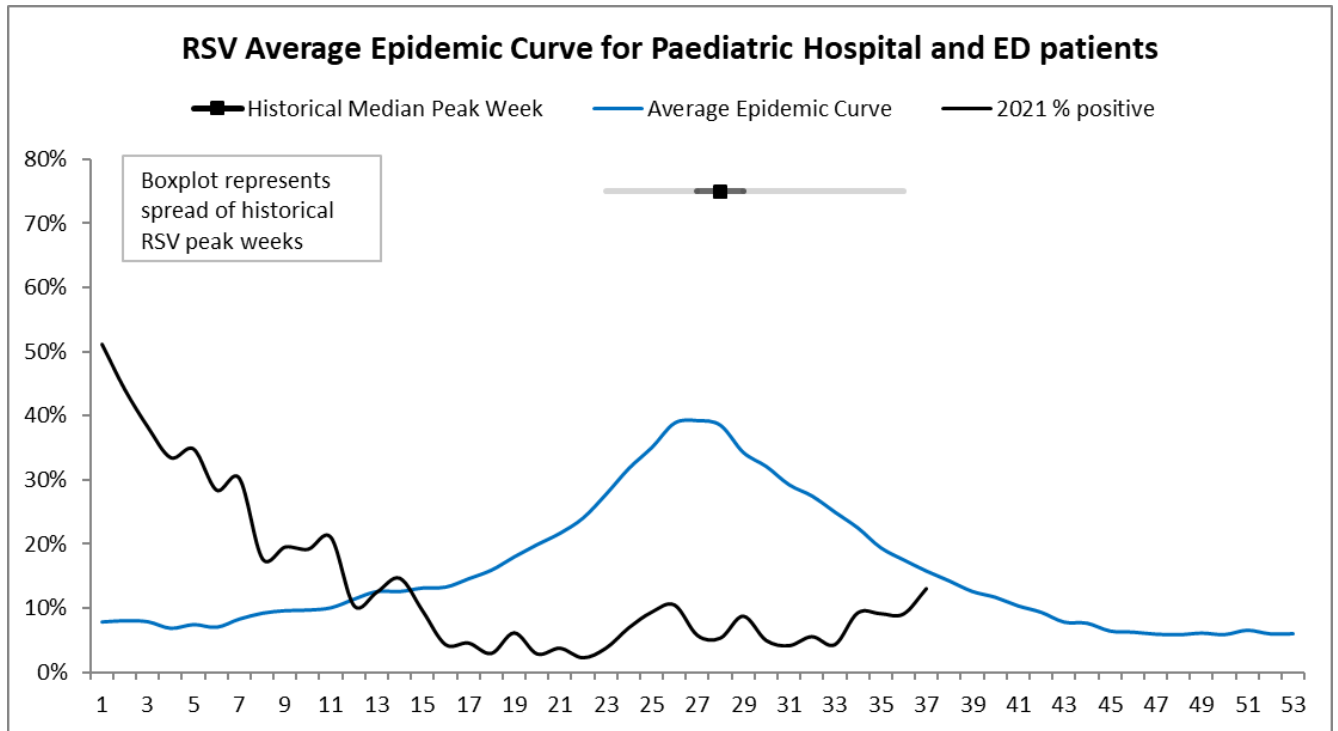


Figure 2: The current season plotted against the Paediatric RSV Average Epidemic Curve. The average epidemic curve was constructed by averaging all seasons measured at PathWest QE2 from 2007-2019. The high intensity threshold is 1.645 standard deviations above (upper 90% CI) the average epidemic curve. Data represents all WA hospitalised and ED paediatric patients tested by PathWest.

RSV proportion positive (13%) increased to similar levels historically observed at this time of year.

Data is representative of all patients attending a hospital (public or private) in Western Australia, for which a respiratory sample was collected and tested at a PathWest laboratory.

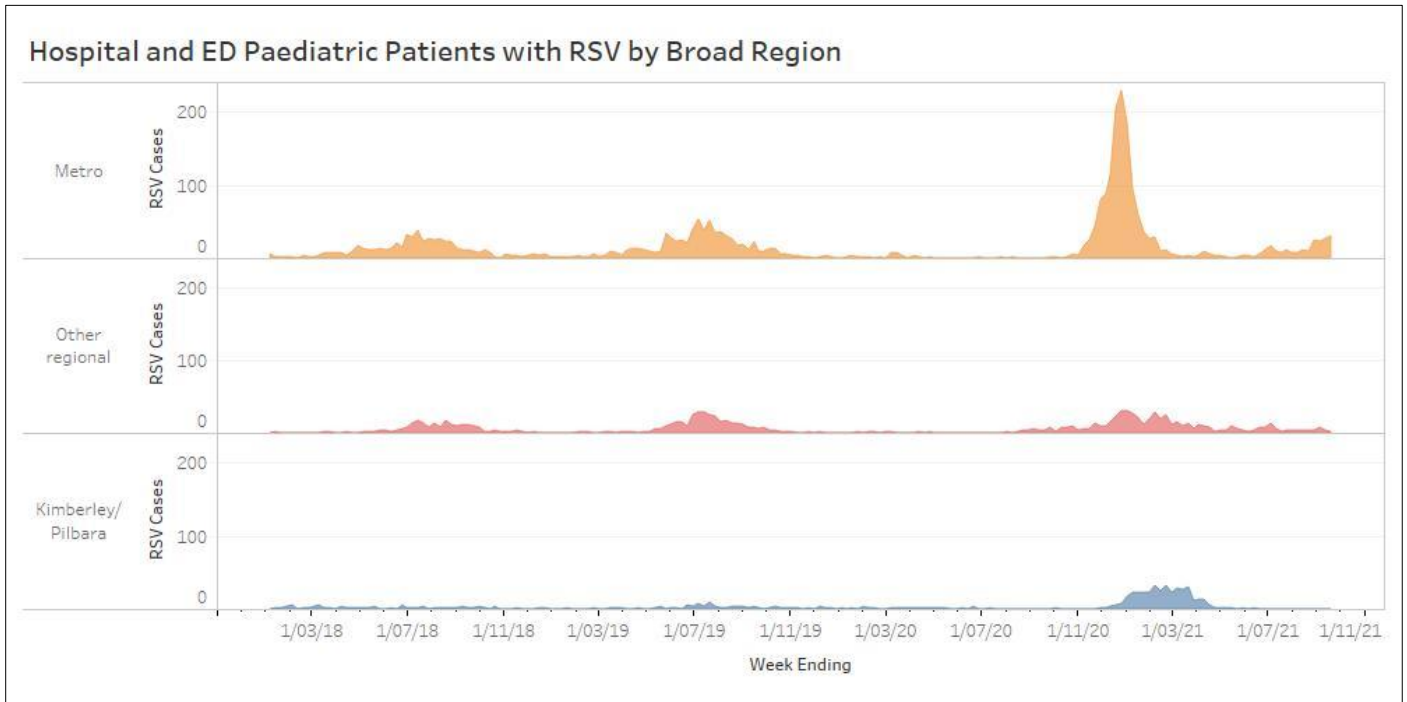


Figure 3: Hospital attending paediatric patients with RSV in Perth metropolitan region, in both Kimberley and Pilbara combined and in the remaining regions combined.

Of the 33 paediatric cases of RSV this week, 31 were from the Metro area and two cases from the Southwest.

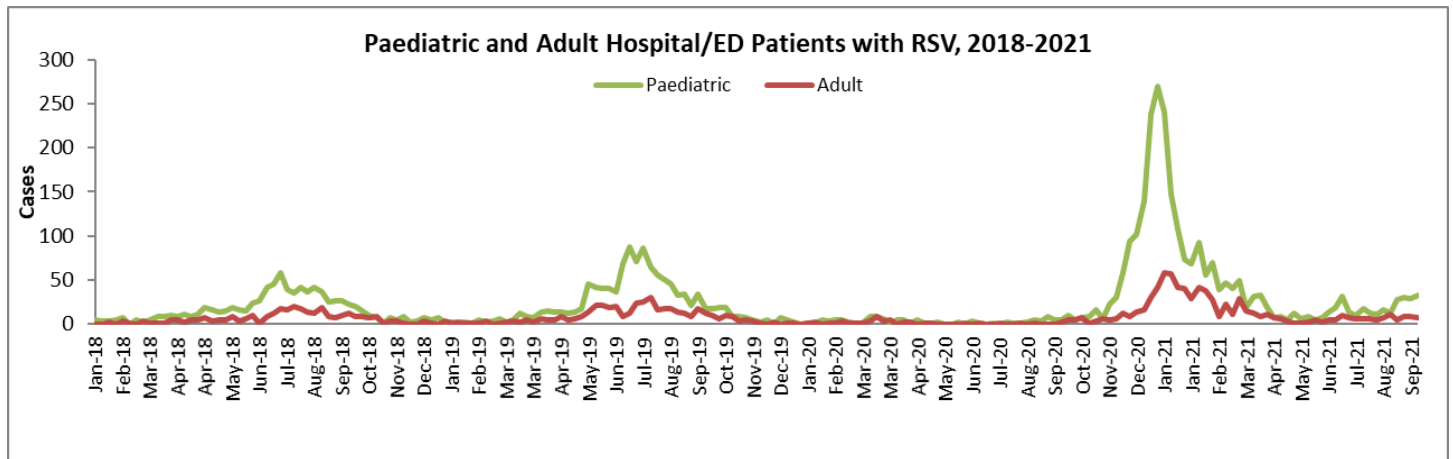


Figure 4: Paediatric and adult hospital attending patients with RSV, 2018-2021.

There were 33 children and 7 adults with RSV who attended a hospital.

Data is representative of all patients attending a hospital (public or private) in Western Australia, for which a respiratory sample was collected and tested at a PathWest laboratory.